



International Tree Foundation

Impact Report 2013



“We forget that we owe our existence to the presence of Trees. As far as forest cover goes, we have never been in such a vulnerable position as we are today. The only answer is to plant more Trees - to Plant Trees for Our Lives.”

Richard St. Barbe Baker

Impact Report 2013

Forests cover one third of the Earth's land mass and are the most biologically-diverse ecosystems on land, home to more than half of the terrestrial species of animals, plants and insects. Trees and forests also provide shelter, jobs and security for around 1.6 billion people. Yet despite all of these priceless ecological, economic, social and health benefits, we are destroying the very forests we need to survive. Global deforestation continues at an alarming rate - 13 million hectares of forest are destroyed annually. This is equivalent to an area the size of 50 football pitches every minute. Deforestation accounts for 12 to 20 percent of the global greenhouse gas emissions that contribute to climate change.

ITF has been working with communities across the globe since 1924 to reverse deforestation. As we enter our 90th year the importance of our work has never been greater.

In 2013 we supported a total of 11 projects, working with our partners in 7 African countries: Ghana, Kenya, Malawi, Mali, Senegal, Tanzania and Uganda.

Local communities supported by ITF projects planted more than 1 million trees; a total of 1,020,839 trees.

ITF's projects directly benefited more than 16,000 people and made a real difference to the lives of thousands more.

This report sets out the positive impact achieved by a selection of our projects in:

- protecting and restoring the environment through the planting and careful management of trees
- creating greater awareness by sharing skills and indigenous knowledge within local communities
- improving food security and livelihoods through agroforestry.

You are welcome to distribute this report as widely as you wish. It is also available as a PDF downloadable from our website at www.internationaltreefoundation.org/resources. The images in this report may also be used with copyright as shown below, ideally with an added web link to the online source document.

© International Tree Foundation





Regreening Sokura, Mopti Region, Mali

Project partner: Sahel Eco

The three-year Regreening Sokura project in the Mopti region of Mali was completed in September 2013. The project largely succeeded in achieving its goal to contribute to reversing the devastating effects of deforestation and land degradation on rural and urban livelihoods in all 28 villages of the Sokura Commune, through increased production and more sustainable use of trees and tree products on agricultural land and in small scale plantations.

The awareness raising and support activities of Sahel Eco revitalised the traditional Tree Surveillance brigades. In many villages, they had ceased to function. By arranging for their official recognition and registration, Sahel Eco empowered villages to develop greater control in managing and protecting their field trees, and prevent illegal wood cutting.

An independent evaluation of the project found that: *“The Regreening Sokura project succeeded in promoting a community-led natural resource management and tree regeneration process. In the rural Drylands area of Sokura, over three years, Sahel Eco significantly slowed down and helped reverse long term trends of deforestation. Villagers, both men and women reported significant benefits. These include improved soil fertility, improved agricultural production, decreased household expenses, increased income, and enhanced biodiversity through the restoration of indigenous tree resources on agricultural land”* - **Peter Gubbels, Groundswell International**

Achievements

- 67 local people trained in tree seedling production and out-planting techniques. Of these, 21 people in 19 villages (including 10 in the flood plain) established tree plantations.
- A total of 25,616 trees were planted with a survival rate of over 96%.
- 204 farmers adopted Farmer Managed Natural Regeneration (FMNR), increasing the rate of adoption from 19% at the start of the project to 41% at the end.
- At least 56,684 new trees were established by households applying improved FMNR techniques.

Impact

- Of 14 villages situated in 'dryland' areas, 7 have totally reversed deforestation of the land, 4 have stabilised the level of tree cover and 1 has slowed deforestation.
- Reaching a "critical mass" of FMNR adoption in 5 villages (i.e. a 40% level of adoption) indicating the new practice has become the "norm" and will self-spread.
- Community health is improving by producing trees with medicinal properties.
- Local women have increased their daily incomes from selling tree products.



“My name is Soumaïla Traoré from the village of Djébitaka in the flooded zone of Sokura. When Sahel Eco approached us I jumped at the opportunity. I received training on the production of tree seedlings and on tree planting. After the training I straight away threw myself into production and I have succeeded in producing 957 trees.”

Community Tree Planting Initiative, Lira, Northern Uganda

Project partner: Friends of Environment for Development (FED)

ITF has been supporting FED's Community Tree Planting Initiative for the past two years. The project in the Agali sub-county of Lira district aims to engage the community in a tree planting campaign to restore tree cover depleted by indiscriminate tree cutting for charcoal and firewood, create jobs within the local communities, increase household income and increase environmental and agroforestry awareness by reaching out to a wide range of local people.

Communities, having seen first-hand the consequence of climate change such as prolonged droughts, erratic rain patterns and flooding - which is a new phenomenon in this part of the world - appreciate the importance of tree planting as the only sustainable and cost effective way of reversing these trends and raising their quality of life.

Achievements

- 83,000 trees planted and an additional 1,000 trees assisted to regenerate naturally.
- 8 community tree nurseries established
- Local people, especially young people, have been supported to start up private, commercial roadside tree nurseries - one being the Planet Greening Initiative - from which they can gain an income.



“The Community Tree Planting Initiative’s main characteristic is its broad based all-inclusive approach in that it encourages and enjoins every household whether big or small, rich or poor, urban or rural, illiterate or literate to plant trees for wealth and the good of the environment.”

Paul Chankoma, Chief Executive Officer, FED



Impact

- Local people are more environmentally aware, feel more informed and have greater community involvement with young people, women and elders all working together in unity.
- Local people are experiencing a new sense of satisfaction and confidence due to financial security attributed to the trees planted. Tree owners are satisfied and upbeat that their trees will earn them a living wage by producing fruit, timber and wood by-products.
- Local people are now able to acquire loan funding from financial institutions as their new trees are seen as assets.
- Household income has been boosted as a result of the sale of tree seedlings from the group nurseries, and from new community tree planting and bee-keeping associations.

“With trees you never go wrong. In fact in the near future, how rich you are will be determined by how many trees you have planted, more especially for we the youth, who still have our better years ahead. I am therefore advising all the youth to take to tree planting.”

Anthony, District Youth Councillor



Community Fruit Trees Planting Initiative, Awgu, Nigeria

Project partner: Women in Development and Environment (WIDE)

ITF has established a new partnership with WIDE in Nigeria and started funding this new project in April 2013. The project is training local women and young people as project leaders to manage community fruit tree nurseries and to raise wider community awareness of the importance of tree cultivation and its benefits.

The participants have already developed new skills in planting and managing trees, including budding, grafting seed multiplication, propagation and planting.

Achievements

- Training of 20 women and young people on establishing a fruit tree nursery.
- Training for 20 women and young people on record and book-keeping and marketing strategies.
- A total of 188 fruit trees planted to date
- Awareness raising activities with 100 community members

Impact

- The leaders trained are now able to use their skills to improve their livelihoods and environment and raise the quality of life for themselves and their families.
- The emerging changes to people's lives are the result of the training of project leaders on seed multiplication, budding/grafting, tree propagation and planting and better conservation of the indigenous forest.



“The project has taught me how to raise a nursery, plant fruit trees and earn income from it. I will teach other grassroots women in my community to propagate and plant fruit trees to earn income to improve their wellbeing and cater for their children.”

Franca Nzeakor, Project Leader



Tanchara Tree Growing & Natural Regeneration Project, Northern Ghana Project partner: Centre for Indigenous Knowledge and Organisational Development (CIKOD)

ITF began working with CIKOD at the end of 2012 to support this new project in northern Ghana. CIKOD is working with the Tanchara Youth Federation to regreen the Tanchara community and reduce desertification. The project aims to protect sacred tree groves and preserve endangered medicinal tree species as well as to reduce poverty and create employment for the youth.

To get support for the project youth federation members held drama sessions and football galas to highlight the dangers of unsustainable tree cutting and the benefits of tree cultivation, and to involve different age groups and engage the elders.

The greatest achievements by the youth have been the engagement of the elders in the project as well as the expansion of the youth group to cover all ten sections of Tanchara. The project has also been completely embraced by the Chief and spiritual leaders thus ensuring long term access to land for the tree planting and regeneration.

“The youth group is a messenger sent from above to preserve our indigenous cultural values. You all see that they are protecting our sacred groves to the extent of transplanting trees around them. I think we are blessed. Fellow elders let us all support and give them a listening ear in their request’.”

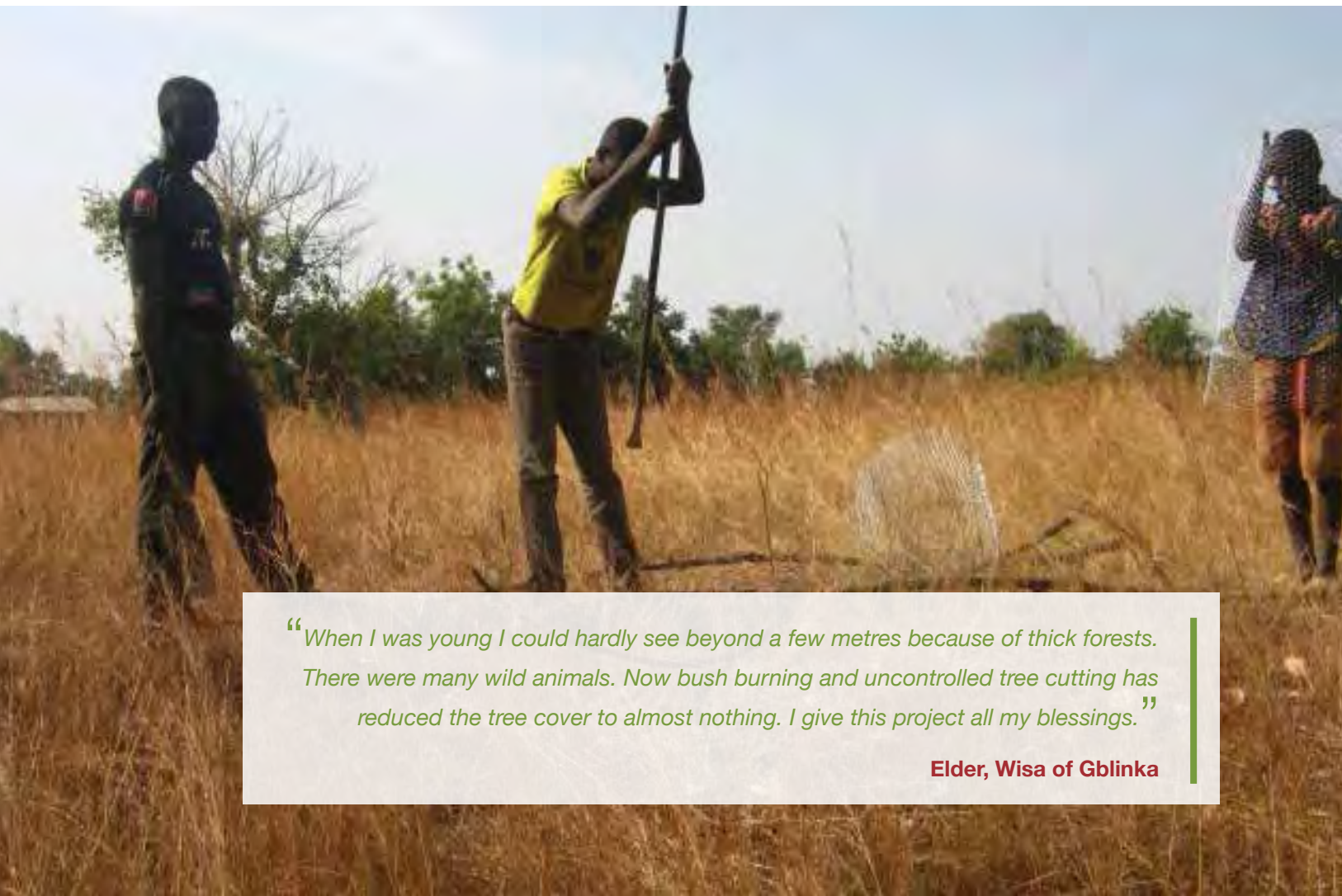
Wone Eranuo (Dangne Tigansob)

Achievements

- 300 young people engaged
- 290 mango, cashew and orange trees planted
- 460 traditional trees and bushes regenerated
- 13 hectares of communal land regenerated

Impact

- Local people have a greater awareness of the issues involved and act as advocates for protecting the environment, including the spiritual leader who blessed the project at its launch in an elaborate ceremony.
- The sacred groves in the village which are considered as the spiritual home of the ancestors have been restored through the trees regenerated or replanted around the groves.
- The membership of the Tanchara Youth Federation has grown and its capacity has been strengthened.
- Increased harmony between youth and elders.



“When I was young I could hardly see beyond a few metres because of thick forests. There were many wild animals. Now bush burning and uncontrolled tree cutting has reduced the tree cover to almost nothing. I give this project all my blessings.”

Elder, Wisa of Gblinka



More information about International Tree Foundation

ITF's origins date back to 1922 when Dr Richard 'St. Barbe' Baker and Chief Josiah Njonjo founded **Watu wa Miti** (People of the Trees) in Kenya. On his return to the UK in 1924 St. Barbe established the **Men of the Trees** which grew into a worldwide movement with branches in more than 100 countries. In 1992 Men of the Trees in the UK changed its name to the International Tree Foundation.

St. Barbe was generations ahead of his time in terms of recognising the importance of sustaining life on Earth, and ITF continues his legacy through its work with partners and communities around the world to improve livelihoods and protect our environment through sustainable forestry and reforestation projects.

ITF is celebrating its 90th Anniversary in 2014 and you can help. We have launched an anniversary appeal to raise £90,000 so that we can plant another 1 million trees.

You can donate at: www.internationaltreefoundation.org/itf-at-90

Find out more about ITF and sign up for our e-bulletin at: www.internationaltreefoundation.org

Email: info@internationaltreefoundation.org

Telephone: 01293 227065

Like us on Facebook or follow us on Twitter @ITF_Worldwide

International Tree Foundation
Crawley Business Centre
Stephenson Way
Three Bridges
Crawley RH10 1TN

Reg Charity no. 1106269

